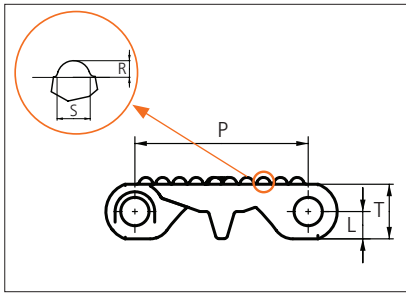
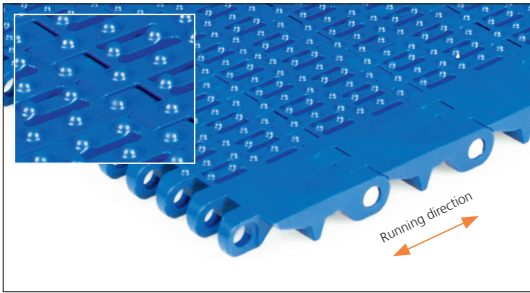




Plastic Modular Belt

Series **uni MPB** Type **20% Open Nub Top**



Straight running belt
 Nominal pitch: 50.8 mm (2.00 in)
 Surface type: Nub Top
 Surface opening: 20%
 Backflex radius: 65.0 mm (2.6 in)
 Pin diameter: 8.0 mm (0.31 in)
 Standard Nub Top indent:
 34.0 mm (1.34 in)

Belt material & color	POM-DI W B	PP W B	PE-I B N														
Pin material & color	PP W			PE W													

Non standard material and color: See uni Material and Color Overview.

Belt width		Permissible tensile force (Belt/pin material)						Belt weight (Belt/pin material)						*Min No drive sprocket per haft	Number of wear strips (min no)	
		POM-DI/PP		PP/PP		PE-I/PE		POM-DI/PP		PP/PP		PE-I/PE			**Carry (pcs)	**Return (pcs)
mm	in	N	lbf	N	lbf	N	lbf	Kg/m	lb/ft	Kg/m	lb/ft	Kg/m	lb/ft			
152	6.0	4180	940	2432	547	1976	444	1.8	1.22	1.3	0.85	1.3	0.90	2	2	2
202	8.0	5555	1249	3232	727	2626	590	2.4	1.62	1.7	1.13	1.8	1.19	2	2	2
252	9.9	6930	1558	4032	906	3276	736	3.0	2.02	2.1	1.41	2.2	1.49	2	2	2
303	11.9	8333	1873	4848	1090	3939	885	3.6	2.42	2.5	1.69	2.7	1.79	3	3	2
353	13.9	9708	2182	5648	1270	4589	1032	4.2	2.82	2.9	1.97	3.1	2.09	3	3	2
403	15.9	11083	2491	6448	1450	5239	1178	4.8	3.22	3.3	2.25	3.5	2.38	3	3	2
454	17.9	12485	2807	7264	1633	5902	1327	5.4	3.63	3.8	2.53	4.0	2.68	4	4	2
504	19.8	13860	3116	8064	1813	6552	1473	6.0	4.03	4.2	2.81	4.4	2.98	4	4	2
554	21.8	15235	3425	8864	1993	7202	1619	6.6	4.43	4.6	3.09	4.9	3.28	4	4	2
605	23.8	16638	3740	9680	2176	7865	1768	7.2	4.84	5.0	3.37	5.3	3.58	5	5	3
655	25.8	18013	4049	10480	2356	8515	1914	7.8	5.24	5.4	3.65	5.8	3.87	5	5	3
705	27.8	19388	4358	11280	2536	9165	2060	8.4	5.64	5.9	3.93	6.2	4.17	5	5	3
756	29.8	20790	4674	12096	2719	9828	2209	9.0	6.05	6.3	4.22	6.7	4.47	6	6	3
806	31.7	22165	4983	12896	2899	10478	2355	9.6	6.45	6.7	4.50	7.1	4.77	6	6	3
857	33.7	23568	5298	13712	3082	11141	2504	10.2	6.85	7.1	4.78	7.5	5.07	6	6	3
907	35.7	24943	5607	14512	3262	11791	2651	10.8	7.25	7.5	5.06	8.0	5.36	7	7	4
957	37.7	26318	5916	15312	3442	12441	2797	11.4	7.65	7.9	5.34	8.4	5.66	7	7	4

Additional standard belt widths are available in steps of 16.8 mm (0.66 in).

1964	77.3	54010	12141	31424	7064	25532	5740	23.4	15.71	16.3	10.96	17.3	11.62	14	14	7
------	------	-------	-------	-------	------	-------	------	------	-------	------	-------	------	-------	----	----	---

Additional standard belt widths are available in steps of 16.8 mm (0.66 in).

2518	99.1	69245	15566	40288	9057	32734	7359	30.0	20.14	20.9	14.05	22.2	14.89	17	17	9
------	------	-------	-------	-------	------	-------	------	------	-------	------	-------	------	-------	----	----	---

General belt tolerance is +0/-0.4% at 23°C/73°F. For exact belt width contact Customer Service. Non standard belt width on request

*Max. Load per Drive Sprocket with snub roller. Belt material: POM-DI 2000 N (450 lbf), PP 1000 N (225 lbf), PE-I 1000 N (225 lbf)

*Max. Load per Drive Sprocket without snub roller. Belt material: POM-DI 1250 N (281 lbf), PP 675 N (151 lbf), PE-I 675 N (151 lbf)

**Max. Spacing between wear strips, Carry: 150.0 mm (6.00 in); Return: 300.0 mm (12.00 in).

□ = Single Link: no indent.



Member of Ammega Group.
 ammega.com

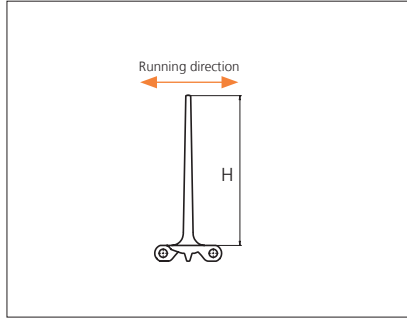
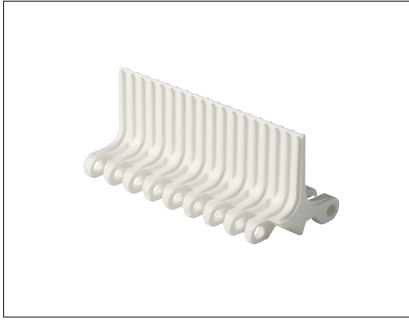
STANDARD

STRAIGHT RUNNING

PITCH 50.8 MM/2.00 IN

Accessories

Flight

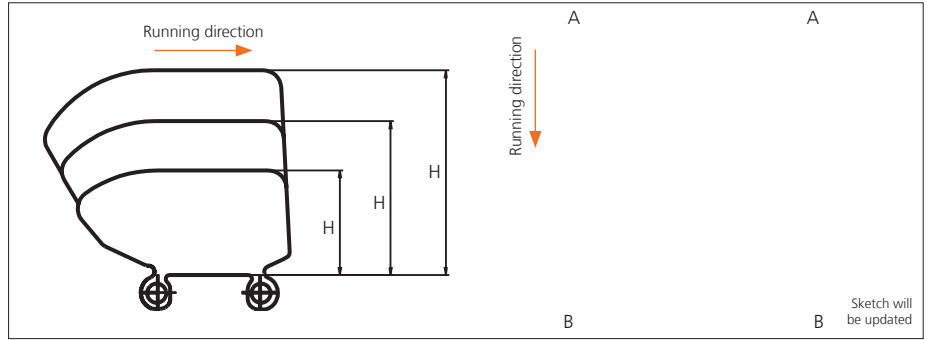
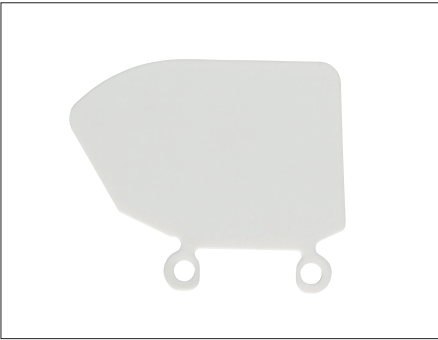


Type	Material & color	H		Link size	Width		Indent both sides	
		mm	in		mm	in	mm	in
10% Non Stick	PP-I W B PE-I B N	50.8	2.00	K600	151.0	5.94	0.0	0.00
		76.2	3.00					
		101.6	4.00					

Non Standard material and color: See uni Material and Color Overview.
 For more options: See separate uni MPB series Flight datasheet.

Accessories

Side Guard

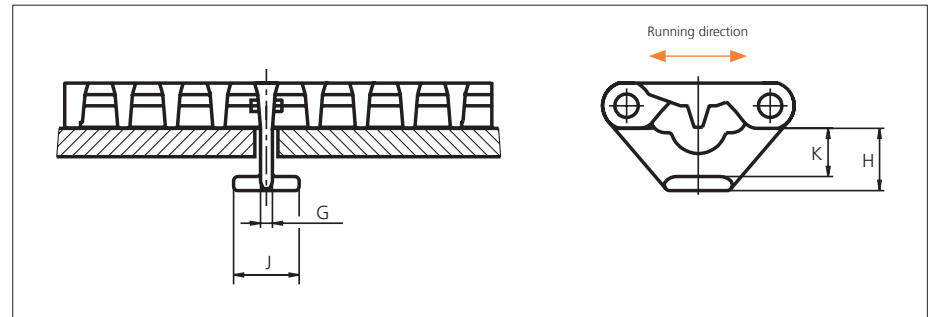


Type	Side Guard Material & color	H		A		B	
		mm	in	mm	in	mm	in
Closed	PE-I B N PP-I W B	50.8	2.00	37.0	1.46	25.0	0.98
		76.2	3.00				
		101.6	4.00				

Backflex radius when side guard are used: 200.0 mm (7.90 in).
 Side guards cannot fit where the nubs are, only at indent.

Accessories

Tab



Type	Tab Material & color	G		J		K		H	
		mm	in	mm	in	mm	in	mm	in
Bottom Hold Down	POM-DI W	4.2	0.17	23.2	0.91	17.0	0.67	22.0	0.87

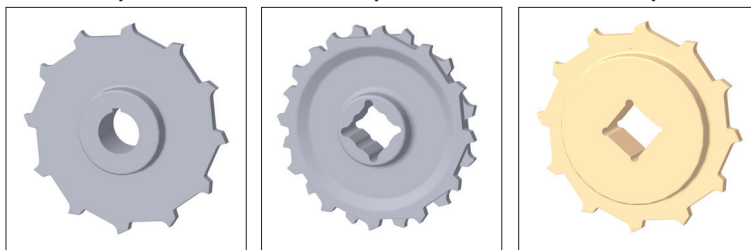
When using taps, please verify sufficient clearance to the shaft. Max. shaft diameter = Sprocket pitch diameter - 63.5 mm (2.50 in). When using square shafts, please verify that the diagonal does not exceed max. diameter. Example: Sprocket z = 6: Max. shaft diameter 101.6 - 63.5 = ø38.1 mm (4.00 - 2.50 = ø1.4 in).
 When using a belt system with tabs, the temperature should be constant. Please note that the tabs are not always placed in the middle of the belt.

Non Standard material and color: See uni Material and Color Overview.

Sprocket

No of teeth	Bore size										Overall diameter		Pitch-diameter		Hub-diameter		Dimension A		Dimension B		Single row/One way	Double row/Two way	Molded	Machined
	Pilot bore	in	1.00	1.18	1.25	1.50	1.57	2.36	2.50	3.54														
	mm	25.4	30.0	31.8	38.1	40.0	60.0	63.5	90.0	mm	in	mm	in	mm	in	mm	in	mm	in					
Z06	✓	●	●	●	■	●	■				99.5	3.92	101.6	4.00	65.0	2.56	36.0	1.42	59.3	2.33	✓		✓	
Z08	✓	●	●	●	■	●	■	■			132.9	5.23	132.8	5.23	65.0	2.56	53.3	2.10	74.9	2.94	✓	1✓	✓	
Z10	✓		1●	1●	1●	1●	1■	2■	2■		166.3	6.55	164.4	6.47	¹ 70.0 ² 120.0	¹ 2.75 ² 4.72	70.2	2.76	90.7	3.57	✓	✓	✓	
Z12	✓		1●	1●	1●	1●	1■	2■	2■	3■	198.6	7.82	196.3	7.73	¹ 70.0 ² 120.0 ³ 164.0	¹ 2.75 ² 4.72 ³ 6.45	86.8	3.42	106.6	4.19	1+2✓	2+3✓	✓	
Z16	✓		2● 1○	2● 1○	2● 1○	2● 1○	2● 1○	3● 1○	2● 1○	3●	263.8	10.39	260.4	10.25	¹ 150.0 ² 164.0 ³ 200.0	¹ 5.90 ² 6.45 ³ 7.87	119.7	4.71	138.7	5.46	1✓	2+3✓	✓	✓

● Molded sprocket ■ Molded sprocket ■ Machined sprocket



Other sprocket sizes are available upon request.
 Other bore sizes on sprockets are available upon request.
 Round bores are always delivered with keyway.
 Max. load per sprocket shown does not take bore size into account.
 Please also ensure that sufficient size shaft is chosen for corresponding load.

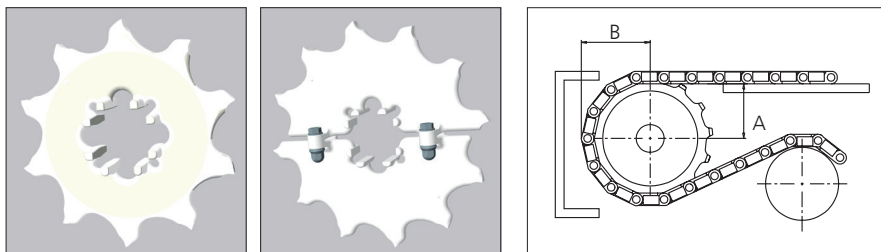
Width of tooth = Single row: 9.5 mm (0.37 in)
 = Double row: 17.8 mm (0.70 in)

Width of One-part sprocket = Single row: 42.3 mm (1.66 in)
 = Double row: 42.3 mm (1.66 in)
 = ³Double row: 50.0 mm (1.96 in)

uni UltraClean One-Part and Two-Part Sprocket

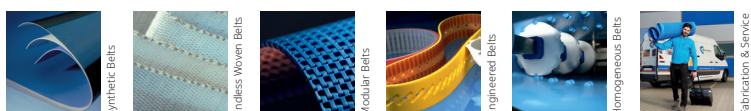
No. of teeth	Bore size				Overall diameter		Pitch-diameter		Hub-diameter		Dimension A		Dimension B		Single row/One way	Moulded
	in	1.50	1.57	2.36												
	mm	38.1	40.0	60.0	mm	in	mm	in	mm	in	mm	in	mm	in		
Z8		1■ 2■	1■ 2■		132.9	5.23	132.8	5.23	¹ 65.0 ² 77.0	¹ 2.56 ² 3.03	53.3	2.10	74.9	2.94	✓	✓
Z10		1■ 2■	1■ 2■	2■	166.3	6.55	164.4	6.47	¹ 65.0 ² 126.0	¹ 2.56 ² 4.96	70.2	2.76	90.7	3.57	✓	✓
Z12		1■ 2■	1■ 2■	2■	198.6	7.82	196.3	7.73	¹ 65.0 ² 126.0	¹ 2.56 ² 4.96	86.8	3.42	106.6	4.19	✓	✓

■ Moulded uni UltraClean OnePart Sprocket ■ Moulded uni UltraClean TwoPart Sprocket



Width of UltraClean Two-part sprocket = Single row: 44.0 mm (1.73 in)
 Width of UltraClean Two-part sprocket, tooth = Single row: 9.5 mm (0.37 in)

uni Retainer Rings: See uni Retainer Ring datasheet.
 For correct sprocket position: See uni Assembly instructions for uni MPB.
 More detailed sprocket information: contact Customer Service.



Expert advice and quality solutions for all your belting needs.
 ammeraalbeltech.com
 eptool.online

Ammeraal Beltech Modular A/S
 Hjulmagervej 21
 DK-7100 Vejle
 T +45 7572 3100

amma.com

This information is subject to alteration due to continuous development. Ammeraal Beltech will not be held liable for the incorrect use of the above stated information. This information replaces previous information. All activities performed and services rendered by Ammeraal Beltech are subject to general terms and conditions of sale and delivery, as applied by its operating companies.